

JEWELA

 DESKTOP ENGRAVER JWX-10

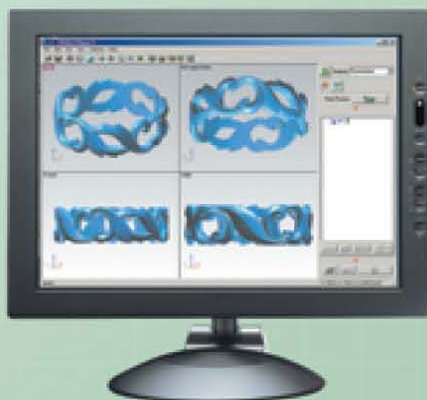
JWX-10

Maintain Your Design Process While Maximizing Your Productivity

Introducing the newest addition to Roland Digital Workbench product line, the JEWELA JWX-10 for producing wax jewelry models. The JWX-10 produces models quickly and with precision in house, allowing you to easily make identical models in different sizes, modify designs and reduce errors, time and cost without changing your conventional process of creating jewelry.

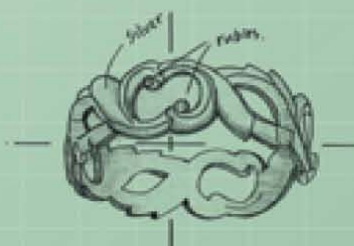


JWX-10



Features:

- Engrave wax master models for rings unattended with the included rotary axis
- Able to use CAD-created jewelry designs
- Professional CAM software included
- Compact size fits small spaces
- Create jewelry wax master models quickly with precision
- Low initial investment



Specifications

		JWX-10
Acceptable materials	Resins such as chemical wood and modeling wax (metal not supported)	
X, Y, and Z operation strokes	Rotary axis unit uninstalled: 140 (X) x 105 (Y) x 105 (Z) mm [5-1/2 (X) x 4-1/8 (Y) x 4-1/8 (Z) in.] Rotary axis unit installed : 140 (X) x 70.9 (Y) x 60 (Z) mm [5-1/2 (X) x 2-3/4 (Y) x 2-3/8 (Z) in.]	
Maximum angle of rotation	± 18 x 10 ⁵ ° (± 5000 rotations)	
Distance from spindle tip to work plate	Using work plate large : Maximum 126 mm (4-15/16 in.) Using work plate small : Maximum 40.5 mm (1-5/8 in.)	
Work plate size Cutting area	Work plate large : 140 (W) x 105 (D) mm [5-1/2 (W) x 4-1/8 (D) in.] Work plate small : 65 (W) x 65 (D) mm [2-9/16 (W) x 2-9/16 (D) in.]	
Dimensions of workpieces installable on the rotary axis unit	Diameter : Maximum 85 mm (3-3/8 in.) Length : 5 to 50 mm (1/4 to 1-15/16 in.) Internal circle : 15 to 23 mm (9/16 to 7/8 in.)	
Loadable workpiece weight	Using rotary axis unit : 0.5 Kg (1.1 lb) (Maximum workpiece moment of inertia 6x10 ⁻⁴ kgm ²) Using work plate large : 4.0 Kg (8.8 lb) Using work plate small : 0.7 Kg (1.5 lb)	
XYZ-axis motor	Stepping motor	
Feed rate	XY-axis : 0.1 to 50 mm/sec. (0.0039 to 1.9 in./s) Z-axis : 0.1 to 30 mm/sec. (0.0039 to 1.1 in./s) A-axis : 0.02 to 11.79 rpm	
Software resolution	0.01 mm/step (0.00039 in./step)	
Mechanical resolution	XYZ-axis : 0.002 mm/step (0.0001 in./step) A-axis : 0.0225 deg.	
Clamping method	Specialized ring-cutting tool	
Rotary-axis tilt angle	0 deg. to 90 deg. (in increments of 15 deg.)	
Spindle motor	DC brushless motor, Maximum 100W	
Spindle rotation	6000 to 20000 rpm	
Tool chuck	Cutter holder (4.36 mm) and collet	
Interface	USB connector, sensor connector, rotary axis unit connector, expansion connector	
Power supply	Voltage and frequency	AC100 to 240 ± 10%, 50/60 Hz
	Required power capacity	2.1 A
Power consumption	Approx. 210W	
Acoustic noise level	No-load operation : 60 dB (A) or less, standby : 40 dB (A) or less [According to ISO7779]	
Dimensions	440 (W) x 517 (D) x 554 (H) mm [17-3/8 (W) x 20-3/8 (D) x 21-7/8 (H) in.]	
Weight	40 Kg (88.2 lb)	
Operation temperature	5 to 40°C (41 to 104°F)	
Operation humidity	35 to 80% (no condensation)	
Accessories	Power cord, collet, cutter, sensor cable, chucking knob, work plate (large), mounting screws for the large work plate, hexagonal wrenches, hexagonal screw drivers, spanners, Roland Software Package CD-ROM, MODELA Player4 CD-ROM, user's manual, Roland Software Package installation and setup guide, MODELA Player4 installation and setup guide	

Roland reserves the right to make changes in specifications, materials or accessories without notice. Your actual output may vary. For optimum output quality, periodic maintenance to critical components may be required. Please contact your Roland dealer for details. No guarantee or warranty is implied other than expressly stated. Roland shall not be liable for any incidental or consequential damages, whether foreseeable or not, caused by defects in such products. All trademarks are the property of their respective owners.



AUTHORIZED DEALER: Lacy West Supplies Limited
102 - 480 Smithe Street
Vancouver, BC V6B 5E4 CANADA
604-669-5229, Fax 604-669-5242
www.lacywest.com

RolandASD rev011405